

# IM200-B Bi Spectrum Thermal Camera

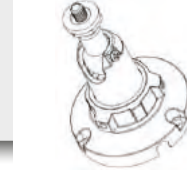
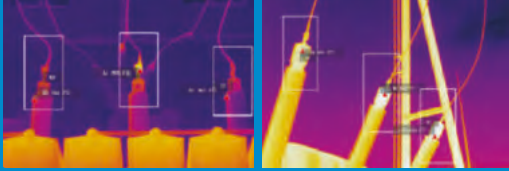
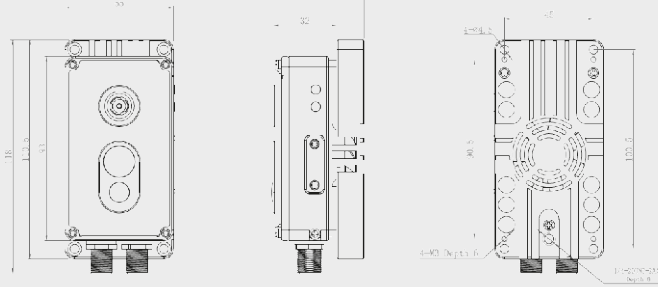
- 256 x 192 resolution IR detector IP67 rated for use in harsh environments.
- A high resolution Sony visual camera gives crisp digital images.
- Intelligent software supports industrial temperature monitoring using spot, line and area measurement tools.



SPECIFICATION	
Model	IM200-B
<b>Thermal Camera</b>	
Detector Type	Uncooled VOx Micro bolometer 256x192
Resolution	256(H)x192(V), Image can be scaled up to 704x576
Pixel Pitch	12 μm
Spectral Range	8-14um
Thermal Sensivity (NETD)	≤60mK
Focus Control	Manual Focus
F No.	F1.1
Focal Length	2.0 mm
Angle of View	H: 90°, V:65°
<b>Visual camera</b>	
Image Sensor	1/2.8" Sony CMOS
Resolution	1600 (H)×1200(V)
Shutter Speed	1/5~ 1/20000s
Wide Dynamic Range	True WDR 120dB
Min. Illumination	Color: 0.1Lux @(F1.2, AGC ON), B/w: 0.01Lux
S/N Ratio	More than 55dB
Max Aperture	F2.0
Angle of View	H: 100°, V: 75"
<b>Illuminator</b>	
LEDS	1pcs White light
Illuminator Range	0.3m distance:0.8m×0.8m,1m distance:1.8m×1.2m
<b>Video and Audio</b>	
Main Stream	Visible:1600×1200,1280×720 @25/30fps,Thermal: D1 @25/30fps
Sub Stream	Visible: D1,VGA,640×360,CIF,QCIF,QVGA @25/30fps, Thermal: CIF @25/30fps
Bit Rate Control	CBR/VBR
Bit Rate	Main stream: Visible: 100kbps~8Mbps,Thermal:100kbps~6Mbps, Sub stream: Visible: 100kbps~6Mbps, Thermal: 10kbps~1.5Mbps,
Region of interest	Off/ On (8 Zone, Rectangle)
Smart Encode	Support
Audio Compression	G.711: 8kbps,RAW PCM: 16kbps
<b>Image</b>	
Image Setting	Brightness,Sharpness,Contrast,Saturation
Mirror	Support
Pseudo-color Setting	White-hot/Black-hot/Rainbow/ronbow etc. up to 17 modes (Thermal)
DVE Image Enhance	Support (Thermal)
Noise Reduction	2D/3D DNR
Privacy Masking	Support
Motion Detection	Support

# IM200-B Bi Spectrum Thermal Camera

INDUSTRIAL MAINTENANCE



Standard  
Accessories

<b>Temperature Detection</b>	
Temperature Detection	Support 3 temperature measurement rule types (Spot, Line, Area)
Temperature Alarm	Over temperature alarm, Temperature difference alarm
Accuracy	±2°C/±2%
Response Time	≤30ms
Temperature Range	-20°C~150°C (-4°F~302°F)
Temperature Display	Display in the lower left corner, follow the cursor display of the highest temperature, lowest temperature or average temperature
Temperature Measurement distance (0.1x0.1m)	3m
<b>Network</b>	
Protocols	IPv4/IPv6, HTTP, RTSP/RTP/RTCP, TCP/UDP, DHCP, DNS, PPPOE, SMTP, 802.1x
Interoperability	ONVIF, CGI, SDK
Max. User Access	10 Users
Web Viewer	<IE11. Chrome, Firefox, Microsoft Edge
Web Language	English, Chinese, Polish, Italian, Portuguese, Spanish, Russian, French, Czech, Hungarian
<b>Interface</b>	
Network Interface	1 Ethernet (10/100 Base-T) RJ-45 Connector
Alarm Interface	1ch input, 1ch output
RS232	Support
RS485	Support
SD Card Slot	Support, up to 256GB
Reset Button	Support (Built-in)
Indicator Light	Power indicator, Network indicator
<b>General</b>	
Power Supply	10-30VDC/PoE (IEEE 802.3af)
Power Consumption	Max 5.4W
Working Temperature	-30°C~60°C (-22°F~140°F)
Storage Conditions	0~90% RH
Certifications	CE/FCC
Ingress Protection	IP67
Casing	Metal
Dimensions	55×46×118mm (2.17×1.81×4.65 inch)
Net Weight	0.52 kg (1.15 lb)