

MX Series

Professional High-Performance Infrared Thermal Imager

- High sensitivity 1024 x 768/1280 x 1024 resolution infrared detector, 12 million pixel camera, laser rangefinder, 180° rotating axis view, 5.5" colour touch screen.
- With its clear image, accurate & powerful easy to use features, it can help users quickly and conveniently identify problems, making detecting more simple and efficient.
- Super resolution and a range of automatically detected lens gives the user powerful tools to find issues.
- Suitable for electric power, electrical and machinery maintenance, metallurgy, petrochemical, building testing and other application fields.



High sensitivity 1024 x 768/1280 x 1024 resolution infrared detector.



180° rotatable optics, manual/ electric /auto focus /laser-assisted focus



Automatic lens recognition



-20°C~+650°C temperature range, extendable to up to 2000°C



5.5-inch touch screen, 1920*1080 resolution, high-resolution viewfinder



Multiple image modes: infrared, visible, picture-in-picture, multi-band fusion (MFI), thermal overlay image



Laser range finder, supports distance and area measurement



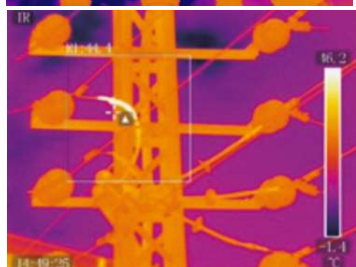
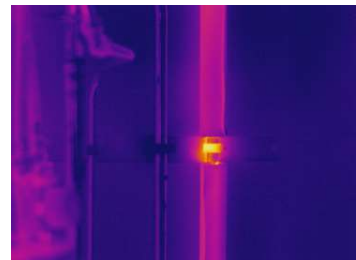
QR code recognition and automatically names the thermal images



OCR, voice assistant and positioning functions, intelligent analysis and diagnosis of the TF card



Type-C, HDMI, Bluetooth, WI-FI Control with APP, 5G interfaces



SPECIFICATION		
Models	MX1000	MX1200
Image Performance		
Detector Type	Uncooled Focal Plane Array	
Resolution	1024×768@12μm	1280×1024@12μm
Super Resolution	Up to 2048×1536 pixels	Up to 2560×2048 pixels
Wavelength	8-14μm	
Image Frame Frequency	50Hz	
NETD	30mk@30°C	30mk@30°C
Lens Focal Length	25mm	30mm
FOV	27.6°×20.9°	28.7°×23.2°
IFOV	0.48mrad	0.4mrad
Lens Recognition	Automatic	
Digital Zoom	1×-45× continuous zoom	
Focus	Manual/electric/automatic/continuous automatic	
Display		
Screen	5.5" touch display screen	
Viewfinder	Built-in 0.5" color OLED display	
Digital Camera	12 megapixel, with built-in LED lights	
Image Mode	Infrared, Visible light image, PNP, Multi-band fusion image MFI, Thermal superposition image	
Palette	12 Palettes (iron red, rainbow, white hot, black hot, etc)	
Measurement & Analysis		
Temperature Measurement Range	-20°C-650°C (expandable to 2000°C)	
Temperature Accuracy	±1°C or ±1%, take the maximum value	
Temperature Measurement Mode	Real-time 35 movable points, lines, area temperature measurement (maximum temperature, lowest temperature capture, average temperature measurement), full-screen maximum temperature and minimum temperature capture, is other mean analysis, temperature difference measurement, temperature alarm (sound, colour)	
Emissivity	Custom input and material table selection, range 0.01-1.0	
Rangefinder	Distance shown on screen	
Measurement Corrections	Emission rate, ambient temperature, reflective temperature, relative humidity, temperature measurement distance, and infrared window compensation	
Image Storage and Transfer		
Image Storage	TF card, standard 128GB	
Image Storage Mode	Infrared images and Digital Camera images are saved simultaneously	
IR Image Format	JPEG format, infrared raw measurement data images; Radiation infrared video recording and nonradiation infrared video recording in H.264 format	
Digital Camera Image Format	JPEG format; H.264/265 format for Digital Camera video recording	
Voice	Supports 60 seconds of voice annotation, stored together with the image	
Text Annotation	Preset text comments with editable text	
QR Code	QR Code Recognition	
Sketch	Optional	
Compass	Optional	
Gravity Sensing	Optional	
5G	Optional	
WiFi	Standard	
Bluetooth	Standard	
OCR support	Optional	
Voice Assistant	Standard	
GPS	Optional	
Intelligent Diagnostic Function	Built-in DL / T664-2016 live Equipment Infrared Diagnosis Application specification, supports task mode shooting, automatic naming of IR image (Optional)	
Transfer Interfaces	Type-C, TF card, 5G Simm, HDMI, Bluetooth, and WiFi	
Power & Battery Supply		
Power supply	12VDC	
Battery Type	Replaceable & Rechargeable Lithium Ion	
Battery Hours	Approximately 3.5 hours Continuous working Time (25°C ambient temperature)	
Battery Charger	12V Charging Dock, 1 hour to 90% & 2 hours to full charge	
Environmental		
Working Temperature	-20°C-50°C	
Storage Temperature	-40°C-70°C	
Humidity	≤95%	
Vibration	2g(GB/T2423.10-2008)/EC60068-2-6:1995	
Shock	25g(GB/T2423.5-2019)/IEC60068-2-27:2008	
Enclosure Rating	IP54	
Physical Specification		
Weight	1.25kg (With a standard lens and batteries)	
Dimensions	216x137x96.5mm	
Accessories	IR thermal imager, rechargeable lithium battery * 2, Charging Dock, power adapter, Type-C to USB cable, HDMI cable, TF card, Card reader, Packing list, Calibration Certificate, User manual, Warranty card, Carry Case	