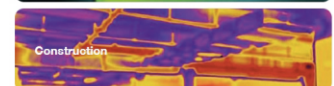
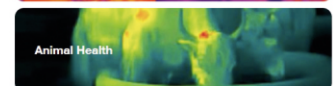
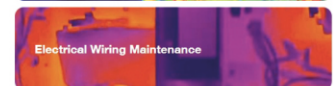
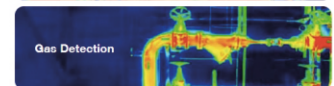


## Mobile Phone Thermal Camera

- High sensitivity 256×196 resolution infrared detector, 108 mega pixel rear camera, 32 mega pixel front camera, 20 mega pixel night vision camera and 6.5" colour touch screen
- Its rugged housing means it is drop proof, water proof and dust proof
- Dual-SIM 5G mobile phone
- The visual, thermal and night vision cameras all give clear and crisp images, accurate & powerful easy to use features, it can help users quickly and convenient identify problems, making detecting more simple and efficient
- Suitable for electrical and machinery maintenance, building testing, hiking, hunting, animal health and other application fields

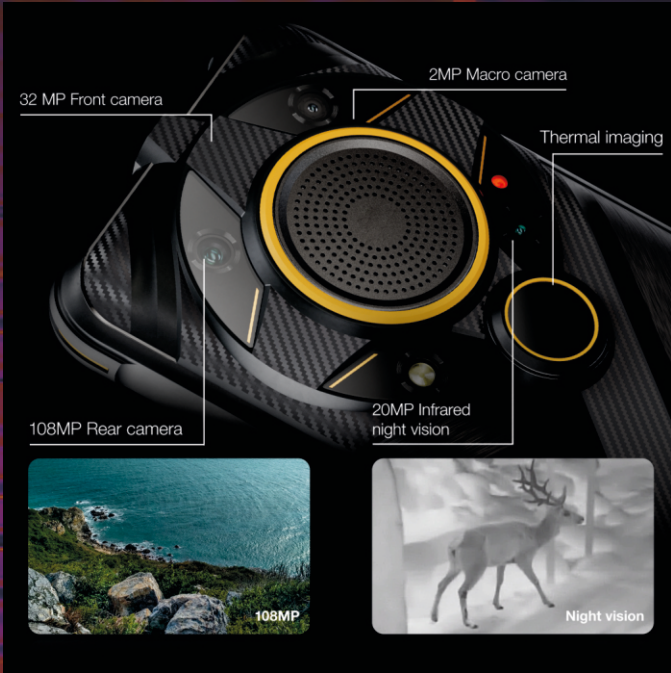


SPECIFICATION	
Models	P1
<b>Visual Image</b>	
Visual Camera Rear	108 Mega Pixel
Visual Camera Front	32 Mega Pixel
Macro Camera Rear	2 Mega Pixel
Night Vision Camera	20 Mega Pixel Night Vision Camera
<b>Thermal Image</b>	
Detector Resolution	256×192 @ 12μm
Wavelength	7.5~14μm
FOV	3.2mm F1.1 56°
Temperature Measurement Accuracy	±2°C or ±2%
Measurement Range	-20°C~550°C
<b>Display, Processing &amp; Interfaces</b>	
Chipset	Qualcomm QCM6490
Screen	8.6Inch
Interfaces	5G, WIFI, Type C, NFC & Bluetooth
Positioning	GPS & Compass
Storage	UFS2.2,8G+256G & 12G+256G (Expandable Storage (TF Card):support , 512G)
Operating System	Android
<b>Environmental</b>	
WorkingTemperature	-20°C~60°C, ≤95%
Enclosure Rating	IP68/IP69K/810H
<b>Physical Specification</b>	
Weight	405g
Dimensions	177.5mm×85.3mm×25.3mm





More Than Eye Can See



**STORE MORE**

Finally get some peace of mind with **256GB ROM** storage capacity. You can even further upgrade it by using a TF card up to **512GB**, in the end no one want to constantly bother freeing up storage on a regular basis, just save your precious data and memories at ease.

**8GB +256GB**

**109dB**  
ICONIC SOUND

**POWER THAT LASTS**

**7000mAh**